

Russell Taylors

E-WARRANTY



SCAN HERE

STEAM HAIR STRAIGHTENER

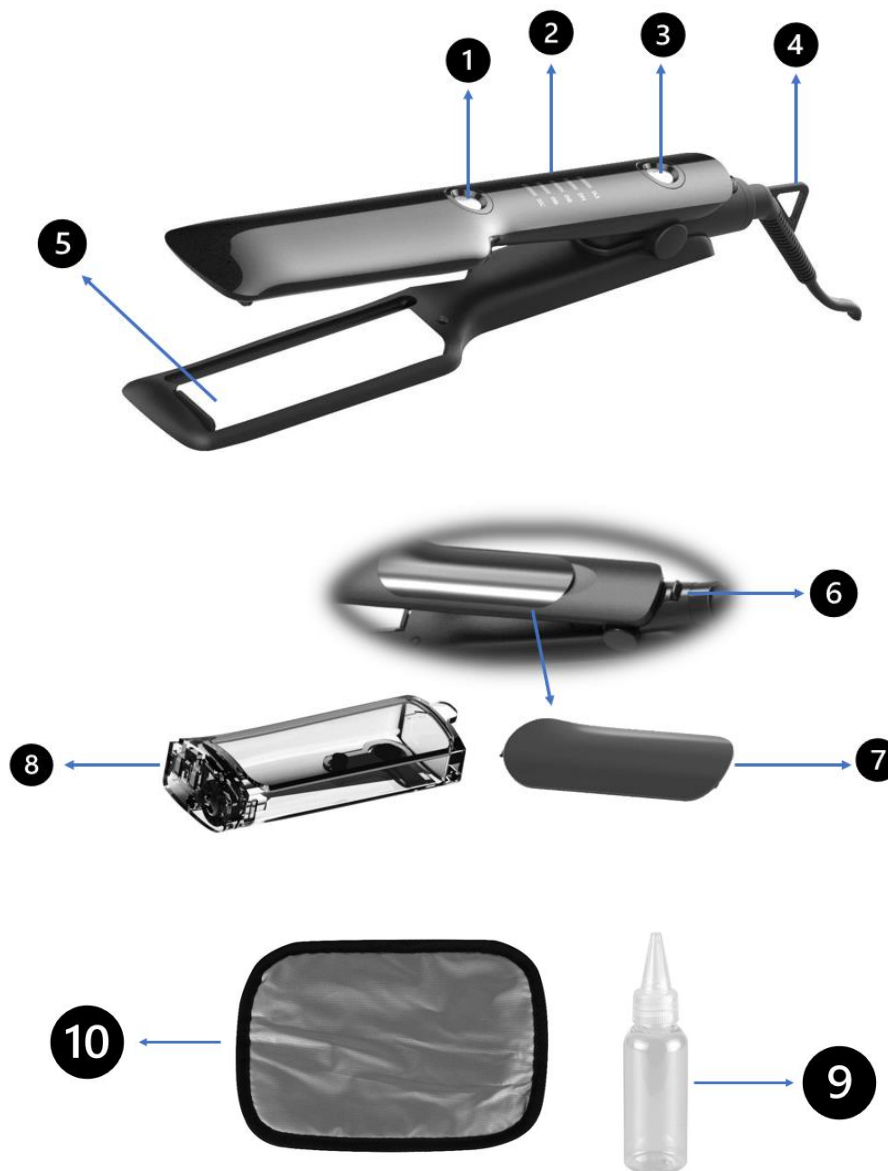
www.russelltaylors.co.uk

USER MANUAL



HS2

DESCRIPTION OF APPLIANCE



1	Steam Button	6	Locking Mechanism
2	Temperature Indicator	7	Protective Cap
3	Temperature Control	8	Water Tank
4	Hanging Loop	9	Water Bottle
5	Ceramic Hot Plate	10	Silicone Matt

SAFETY INSTRUCTIONS

1. Keep all packaging materials out of the reach of babies, toddlers and children. Make sure that all packaging materials are disposed of in a responsible manner. You can find out further information about collection points and recycling from your local authority.
2. This appliance may be used by children above the age of 8 and by persons with reduced physical, sensory, or mental abilities or by those without experience and/or knowledge if they are supervised or have been instructed in the safe use of the appliance and have understood the dangers that are associated with using it.
3. Children must not play with the appliance and should be supervised to ensure that they do not play with the appliance. Cleaning and user maintenance must not be carried out by children unless they are supervised.
4. Do not allow this appliance to be used by anyone who is not familiar with it or has not read these instructions.
5. Never leave the appliance unattended when it is in use.
6. Do not open the housing under any circumstances. The only exception to this is the water tank. Never insert any objects inside the casing.
7. Do not submerge the appliance in water and do not use it near to water. Make particularly sure that you do not use it near to sinks, baths or similar vessels. Do not allow any liquids to penetrate the appliance. The only exception to this is the water tank.
8. After use, the appliance should only ever be cooled down
9. naturally. To allow the appliance to cool, you can hang it up using the hanging loop or place it on top of the station mat. Never cool the appliance under water!
10. Never use any types of oil, flammable liquids or liquids that could damage the atomizer or cause a fire.
11. Do not use the appliance outdoors or in a wet room.
12. Never touch the appliance with wet or damp hands, and do not use the appliance while standing on a wet floor.
13. Check that the main voltage and the type of electrical current matches the information provided on the type of plate on the appliance before connecting it to the main power supply.
14. Do not use the appliance if it displays any signs of damage or if the appliance has fallen onto the floor or may have been otherwise damaged.
15. Do not use, store, or place the appliance on or near to hot surfaces and exposed ignition sources (e.g., hobs, ovens, radiators, or candles).
16. Keep the appliance away from flammable materials.

17. Regularly check the appliance, main plug and the main cable for damage.
If the main cable has been damaged or severed, do not touch the cable. Remove the plug from the socket immediately!
18. RISK OF ELECTRIC SHOCK! If the main cable is damaged, it must be replaced by the manufacturer, a member of the customer service team or another suitably qualified person in order to prevent any risks.
19. To avoid any dangerous situations arising, a faulty appliance may only be repaired by either the manufacturer, its customer service
20. department or a similarly qualified person.
21. Please contact customer services if the appliance malfunctions or shows any signs of damage.
22. Plug the main plug into an easily accessible main socket so that you can quickly disconnect the appliance from the main supply in the event of an emergency. Disconnect the main plug from the main socket to switch off the appliance completely. Use the main plug as a cut-off, which should be always easily accessible. The appliance receives power as soon as it is connected to the main electricity network.
23. Always keep the main cable away from the immediate area in which the appliance is being used and guide it backwards away from the appliance.
24. Do not use the main cable for any other purpose, e.g. for carrying or hanging up the appliance or for pulling the plug out of the main socket. Do not wind the cable around the appliance. Keep the main cable away from heat, oil and sharp edges. Ensure that the main cable is not crushed, bent or scoured.
25. Make sure that the main cable is plugged into a socket where no-one can accidentally pull or trip over the cable.
26. Do not use an extension cable.
27. This appliance should not be operated on an external timer or a separate remote-control system.
28. Disconnect the main plug if you take a break from using the appliance, before you clean the appliance, if the appliance is left unattended, if the appliance malfunctions or in hazardous situations.
29. Do not touch the hot plates or the upper part of the appliance when in use! Only touch the appliance on the handle!
30. Do not allow the hot plates to touch the scalp or the ears!
31. Allow the appliance to cool down before cleaning it.
32. The automatic shut-off has been designed for safety purposes only. It is not a substitute for manually switching off the appliance using the On/Off/Temperature button.

33. Never use alcohol, acetone, benzene, or any other aggressive cleaning agents to clean the plastic components. Do not use hard brushes or metal objects.

PACKAGE CONTENTS

- 1 × hair straightener with cold steam function
- 1 × filling bottle
- 1 × station mat
- These operating instructions

Please ensure that all components are included in the package and check for any visible damage. Do not use this appliance if you notice that it is damaged in any way. Please contact the Russell Taylors Customer Service team immediately. All components listed above should be included. Only use accessories that are listed in the operating instructions. The use of any other parts or accessories than those listed here may place you at risk of injury or damage the appliance beyond repair and will invalidate the guarantee.

BEFORE USING FOR THE FIRST TIME

Remove all packaging materials and check the appliance and its accessories for any damage. Do not use this appliance if you notice that it is damaged in any way. Whenever possible, please retain the original packaging during the warranty period so that you can use it to return the appliance if you need to claim the warranty.

Note:

- Hair must be clean, dry and free from styling products, except those specifically designed to help straighten hair.
- Comb your hair thoroughly before using the straightener to get rid of any knots.
- The hot plates must be cleaned before use. Please proceed as outlined in the “*CLEANING, CARE AND STORAGE*” section of these instructions.
- When straightening your hair, begin with the bottom layers at the back and work forwards around each side.
- The appliance has an automatic shut-off function. This switches the appliance off after approx. 60 minutes (+/- 5 minutes). If you want to continue using the appliance, switch it off momentarily by removing the power supply and switching it back on again.

Filling the water tank

Note:

- Only fill the water tank if you want to make use of added steam.
1. Unscrew the top of the filling bottle and fill the bottle with clean tap water. Never use any types of oil, flammable liquids or liquids that could damage the atomizer or cause a fire. Screw the top back on the filling bottle.
 2. Open the protective cap and carefully pull the water tank upwards, before sliding it backwards out of the appliance.

3. Open the black rubber stopper on the water tank. Make sure that you do not rip off the rubber strap that holds the stopper on to the water tank. Pull the rubber tab gently and only as far from the water tank as needed to ensure that the rubber stopper is open, and the tank can be refilled through the opening.
4. Twist the cap off the filling bottle and insert the tip into the refill hole on the water tank. Tilt the water tank as you refill it to allow the water to flow down.
5. Squeeze the filling bottle gently so that the water flows into the water tank.
6. Once the water tank is full, hold the water tank upright again and remove the filling bottle from the refill hole.
7. Put the rubber stopper back in.
8. Carefully close the water tank again and press it carefully downwards. Replace the protective cap and press on firmly.

Straightening hair

Note:

- This appliance features a locking mechanism for your safety.
- To release the locking mechanism, squeeze the hot plates together and pull the locking mechanism backwards. The appliance can now open fully.

1. Plug the main plug into a main socket.
2. Press and hold the On/Off/temperature button down for a few seconds until the temperature level 1 (120°C) blue indicator lamp starts to flash. The indicator lamp flashes to show that the appliance is heating up.
3. Select the correct temperature for your hair by repeatedly pressing the On/Off/temperature button until the lamp indicates that the desired temperature has been set.

The appliance has 5 temperature settings.

- Temperature level 1: 120°C for sensitive hair
- Temperature level 2: 140°C for fine hair
- Temperature level 3: 160°C for normal hair
- Temperature level 4: 180°C for thick hair
- Temperature level 5: 200°C for thick hair that is difficult to style

Note:

- Select a low temperature if you are straightening sensitive or fine hair.
 - Select a high temperature if you are straightening thick hair.
 - If you are unsure, always begin with the lowest temperature setting and increase the temperature until you have found the perfect setting.
4. Once the appliance has reached the desired temperature, the temperature indication lamp lights up permanently blue.
 5. Switch on the cold steam function when needed by pressing the steam button. The addition of cold steam has a protective effect on your hair as you are straightening it. Depending on your hair type, your hair will be left looking silkier and shinier.
 6. Using your free hand, separate a 2-cm-wide section of your hair and hold it tightly between your index and middle fingers.

7. Starting close to the scalp, clamp the top of the section of hair between the hot plates. Make sure that the hot plates do not touch the scalp.
8. Working at a quick, even pace, run the hair straightener down from the roots to the tips. Repeat this process with the other sections of hair.
9. Once you have finished styling your hair, keep the On/Off/temperature button pressed for a few seconds until the appliance has switched off. The indicator lamp will go out. Disconnect the main plug from the main socket and allow the appliance to cool down completely. Always place the appliance on a heat-resistant surface to cool down, or on the silver side of the station mat supplied with the appliance. You can also hang up the appliance to cool down using the hanging loop.
10. Squeeze the hot plates together and push the locking mechanism forwards again.

Note:

- Always empty the water tank after you have finished using the appliance and wipe the tank dry with a cloth.
- Always wipe the hot plates with a cloth after you have finished using the appliance.

CLEANING, CARE AND STORAGE

This appliance is maintenance-free.

1. Make sure you have read the safety instructions before cleaning.
2. Avoid high or low temperatures and direct sunlight.
3. Use a slightly dampened cloth and, if necessary, a mild cleaning agent for cleaning the appliance.
4. Make sure that no water penetrates inside the housing. The only exception to this is the water tank.
5. Never immerse the appliance in water or other liquids while cleaning or operating it. Never hold the appliance under running water.
6. Dry all parts thoroughly before using the appliance again or storing it.
7. The appliance must always be kept clean and dry.
8. Do not use sharp objects, benzene, solvents, or cleaning agents that damage plastics under any circumstances.
9. Store the appliance and all its accessories in a location that is protected from dust, moisture, and direct sunlight. Store the appliance out of the reach of children.