

**OMEGA PLUS
SERIES**

INSTRUCTION MANUAL

E-WARRANTY



SCAN HERE

Russell Taylors



WARRANTY

- This product is backed by a 2-year warranty against manufacturing defects.
- Wear and tear of the filter is not covered by the 2-year warranty. If a replacement is required, please contact our customer service team to order a replacement.
- This product is only for household use. Any evidence of commercial use will result in void of warranty.
- You may register your warranty through our website (www.russelltaylors.co.uk).

BEFORE FIRST USE

Before using, please read this user manual carefully and keep it for future reference.

Note : Before using the product for the first time, remove all packing materials around the filter.

Danger Warning

- To avoid electrical shock and fire, do not allow water or any other flammable liquids to get into or use it to clean the product.
- Do not spray any flammable material such as insecticides or perfumes around the product.

Safety Warning

- Before connecting the power supply, check if the voltage of the product is consistent with the local power supply voltage.
- To avoid danger, if the power cord is damaged it must be replaced by a qualified individual.
- Stop using the product if the plug, power cord or product is damaged. Keep the air inlet & outlet free from being blocked.
- Do not insert objects into the product from the air inlet to avoid blockage.

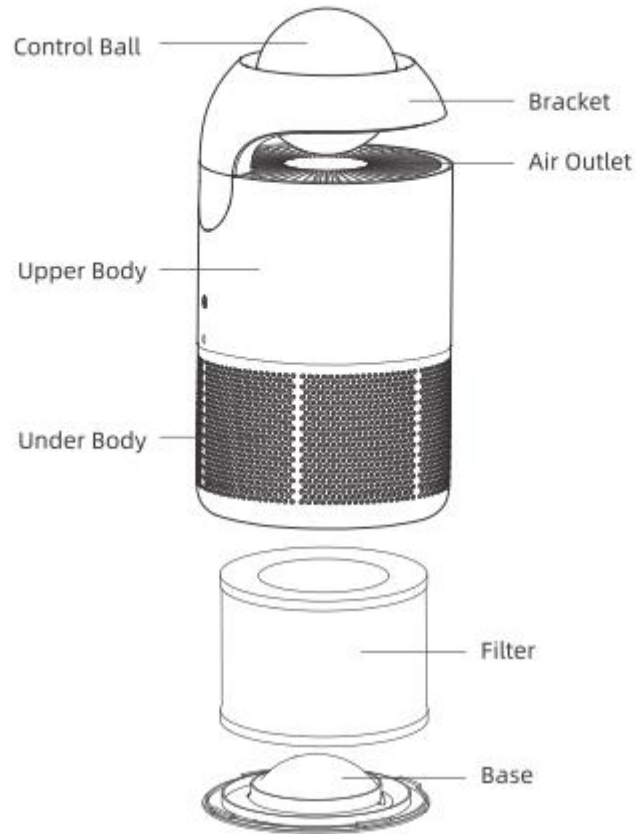
- People with physical or mentally disability, without relevant experience and skills, including children, are only allowed to use the product under guidance and instruction. Do not let children use, clean and maintain the product without supervision.

While Using

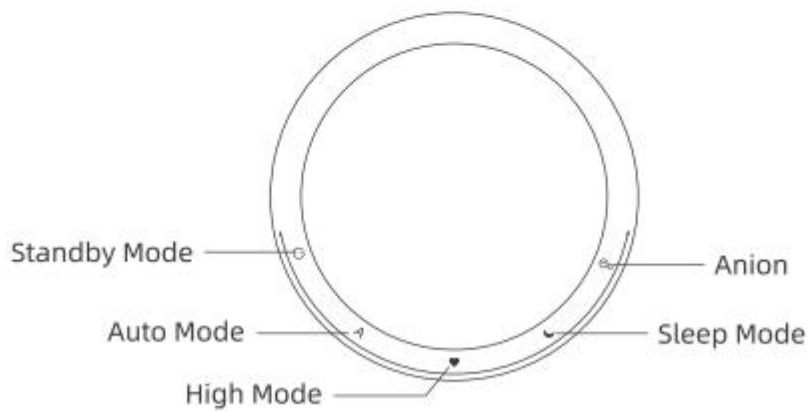
- The product cannot replace normal ventilation systems.
- Do not place anything on the product.
- Be sure to place the product on a firm, flat and horizontal surface.
- Leave at least 30cm of air inlet space and 50cm of air outlet space.
- Do not place the product under the air conditioner to prevent water condensation dropping into the product.
- Do not use hard objects to poke the air inlet and air outlet.

Product Overview

Components

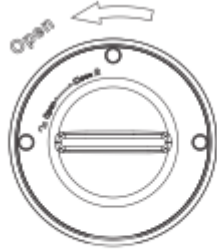


Control Ball



Filter Installation

1. Invert the product, rotate and open the base in the direct marked "Open". Take out the filter from the product.



1

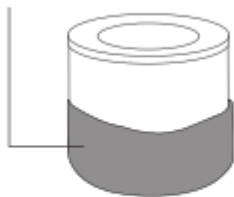
2. Take the filter out from the product.



2

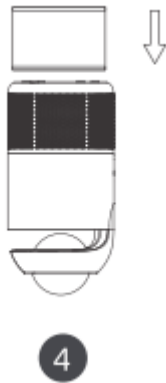
3. Remove the packing of the filter.

packing bag

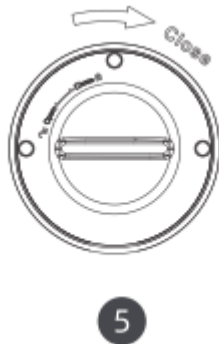


3

4. Put the filter back into the product.



5. Install the base, rotate and tighten the base in the direction marked "Close".



Function Instructions

Standby Mode:

- When powering on, the air purifier beeps once and enters standby mode. The indicator light will flash.

A Auto Mode:

- When the control ball shifts to auto mode, the air purifier runs into the auto mode and the indicator light will remain on. The background light has three colours to indicate the air quality.

Blue: Good air quality, the product runs on low mode.

Yellow: Average air quality, the product runs on middle mode.

Red: Poor air quality, the products run on high mode.

♥ High Mode:

- When the control ball shifts to high mode, the products will run on high mode and the indicator light will remain on. This is used when the air quality is poor to increase the suction of dirt and pollutants.

☾ Sleep Mode:

- When the control ball shifts to sleep mode, the product runs on sleep mode and the indicator light will remain on. Sleep mode results in a lower suction for a silent function.

⊖ Anion/UV setting

- Shifting the control ball to the Anion/UV mode will turn on or turn off the anion/UV function. When this function is turned on, the UV lamp runs in a cycle of two hours turned on and turns off for two hours.

📶 WIFI Function:

- To enter the Wi-Fi function, press the control ball for 5 seconds to enter the network configuration state. The background light will begin flashing. After the air purifier has been connected to your local network, the light will remain lit.

📅 Turn off the reminder of filter replacement.

- When the background light flashes orange, this is an indicator that the filter will need to be changed. To turn off the reminder, press the control ball for 5 seconds and the indicator will be turned off.

⚙️ PM2.5 background light colors:

- According to the PM2.5 level in the air detected by its module, the background light will show 3 different colours. (Blue – Good air quality, Yellow – Average air quality, Red – Bad air quality)

Wi-Fi Operation

- Download the Smart Life app from the Apple Appstore or Google Playstore.
- Open the app and register an account with your phone number or email and then sign in.

Adding a device:

1. Connect your phone to your home network and turn on your Bluetooth (Only use 2.4Ghz Wifi Network. 5Ghz network will not work to pair the device).
2. Open the Smart Life app.
3. Click "+" to add device on the homepage. The app will display two options, "Add Manually" and "Auto Scan".
4. Auto Scan will automatically discover the air purifier. To do so, the product needs to be turned on and needs to be set into configuration mode. This can be done by pressing the control ball for 5 seconds until the lights are flashing.
5. To use the add manually function, select the product name and select Wi-Fi + Bluetooth Mode.

Bluetooth Configuration

- Make sure the Wi-Fi indicator on the air purifier is blinking rapidly. Click next and wait for the connection. When the notification "Add 1 device successfully" appears, the connection is now complete and the device will now appear in the app.

Access Point Mode (AP Mode)

- Click the Wi-Fi quick connection on the upper right corner to select Access Point Mode. Confirm that the Wi-Fi indicator of the device is blinking slowly, click next, and enter your home Wi-Fi name and password. Next, click "Go to connect" and enter the WLAN setting interface in your mobile phone and select the WIFI network named "SmartLife-XXX" to connect it. Return to the Smart Life app and the connection will begin automatically. When "Add 1 device

successfully” appears, it means the connection has been completed and your device will now appear in the app. Your phone and smart device must be connected to the network.

Filter Replacement

- When the background light flashes orange, it means the filter needs to be replaced. Do not use other filter brands.
- Clean the filter regularly and do not wash or reuse the filter.
- Ensure the product is unplugged before replacing the filter.
- Do not use a vacuum to clean the filter.

Maintenance

- Ensure the product is unplugged before maintenance.
- Do not use abrasive, corrosive or flammable liquids to clean the product.
- Do not wash the filter.
- Use a soft cloth with a neutral cleanser to clean the shell, inlet and outlet.

Troubleshooting

PROBLEM	RESOLUTION
The product is not working	<ul style="list-style-type: none">• Is it plugged into a power socket?• Is the switch leaking or fuse cut off?• Is the filter replacing indicator flashing?
Poor performance	<ul style="list-style-type: none">• Is there any dust in the surface of the pre-filter?• Is there any obstacle blocking the air inlet/outlet?
Very Noisy	<ul style="list-style-type: none">• Is there anything stuck on the fan in the air outlet?<ul style="list-style-type: none">• Is the machine tilted?
Bad odour from the air purifier	<ul style="list-style-type: none">• Normal phenomenon that the machine emits a plastic smell for the first use.• The machine will emit a nasty smell if the filter is dusty, in this case, please clean or replace the filter.• If there is a burning smell coming from the machine, please unplug the power socket and contact our customer service.