

# Russell Taylors

[www.russelltaylors.com](http://www.russelltaylors.com)

E-WARRANTY



SCAN HERE

**STEAM GENERATOR**

**USER MANUAL**

**SG-10**



This product is backed by a 2-year warranty against manufacturing defects. For warranty claims, please email us at [support@russelltaylors.com](mailto:support@russelltaylors.com) and provide your order number or invoice.

RT

## IMPORTANT SAFEGUARDS

Before using the steam generator, basic precautions should always be followed including the following:

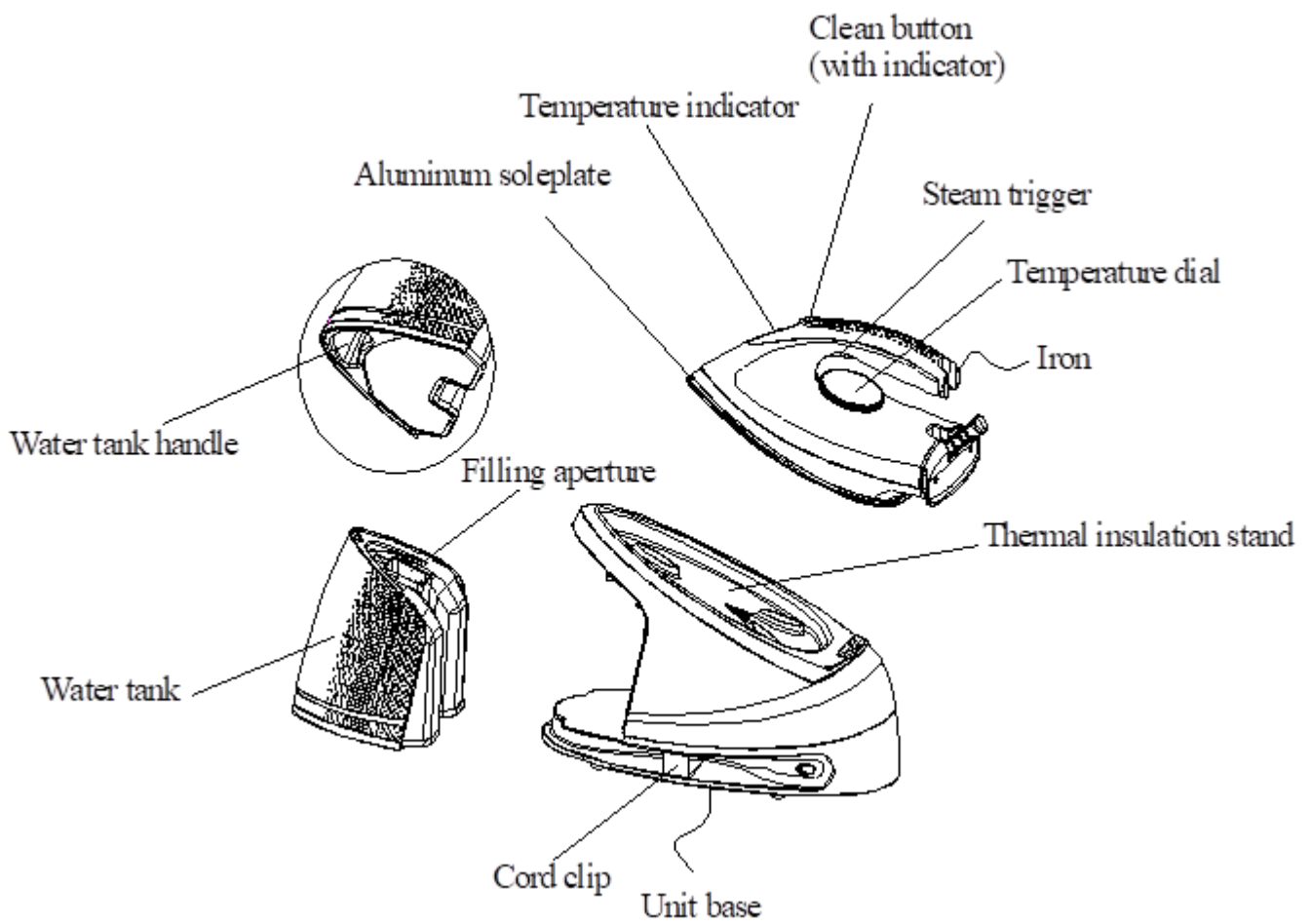
**1. Read all instructions.**

2. Before using, check that the voltage of your wall outlet corresponds to the one shown on the rating label under the product.
3. Do not use the appliance if the main cord, plug or the appliance itself shows visible damage, or the appliance has been dropped or is leaking. Contact us at [support@russelltaylors.com](mailto:support@russelltaylors.com) for examination and repair to avoid further damage.
4. If the power supply cord is damaged, it must be replaced by the Russell Taylors service team, please contact us at [support@russelltaylors.com](mailto:support@russelltaylors.com).
5. Do not allow the cord to touch the soleplate when it is hot.
6. Burns may occur from touching hot metal parts, hot water, or steam.
7. Do not let cord hang over edge of a table or hot surface.
8. To protect against a risk of electric shock, never immerse the iron in water or other liquids. If this has happened, do not use this appliance while it is wet and wait for it to complete dry. If the product is no longer functioning, please contact our service team.
9. Do not leave the iron unattended while connected into a power supply or on an ironing board.
10. Always place or use the appliance on a stable, level, and horizontal surface.
11. The use of any accessory not provided by the manufacturer may cause injury to persons or damage to appliance. Any

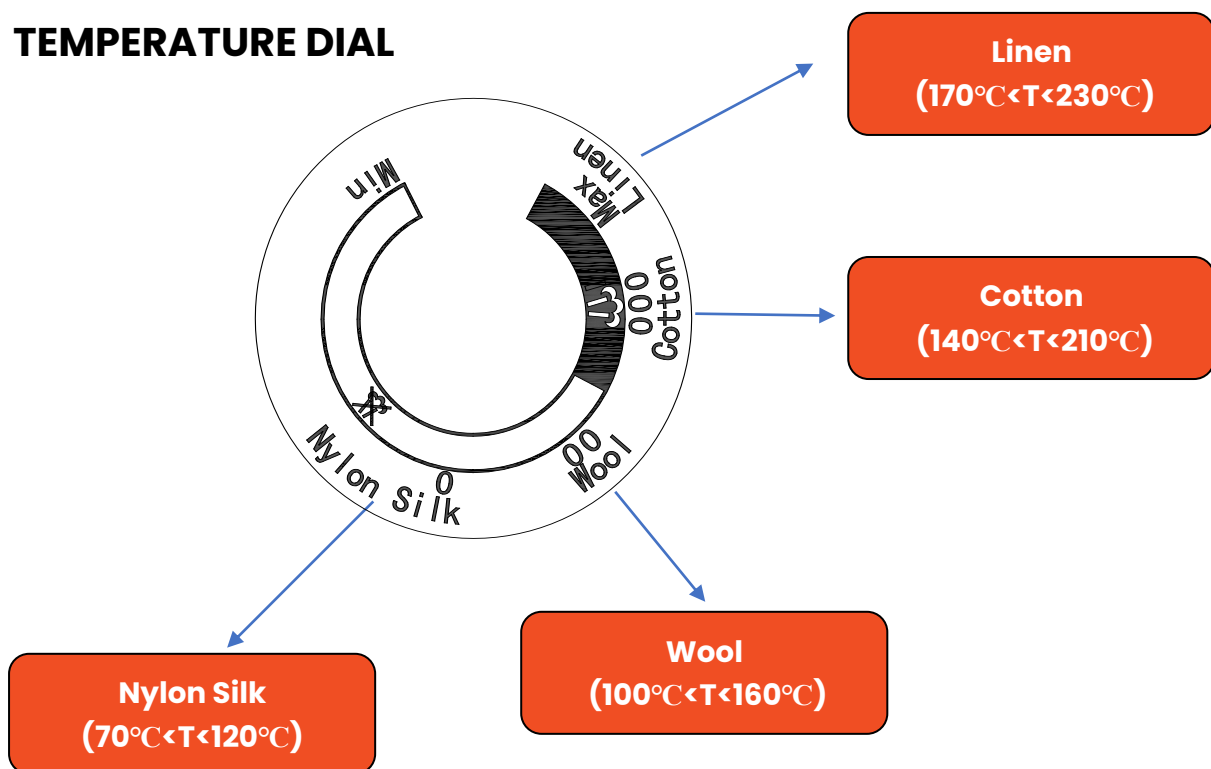
damage caused by unauthorized accessories will result in termination of warranty.

12. When placing the iron on its stand, ensure that the surface on which the stand is placed is stable.
13. Never fill the water tank with hot water, scented liquids, vinegar, starch, descaler, fabric softener or other chemical agents.
14. Unplug from the power outlet when not in use before filling water or cleaning.
15. Do not use the appliance for other than its intended use.
16. This appliance can be used by children aged from 8 years and above and persons with reduced physical, sensory or mental capabilities or lack of experience and knowledge if they have been given supervision or instruction concerning use of the appliance in a way and understand the hazards involved.
17. Children are not to play with the appliance. Cleaning and user maintenance shall not be made by children without adult supervision.
18. The iron is not to be used if it has been dropped or if there are visible signs of damage or if it is leaking.
19. Keep the iron and its cord out of reach of children less than 8 years of age when it is turned on or cooling down.
20. Never touch the hot soleplate unless the iron is cooled down completely and unplugged.
21. Do not use outdoors.
22. Save these instructions.

**HOUSEHOLD USE ONLY**



### TEMPERATURE DIAL



### **FILLING WITH WATER**

Fill the water tank with water through the filling aperture. Make sure the water does not exceed the maximum level listed on the water tank.

### **TEMPERATURE DIAL**

Turn the temperature dial to set the ironing temperature based on the garment that needs to be ironed.

### **TEMPERATURE INDICATOR**

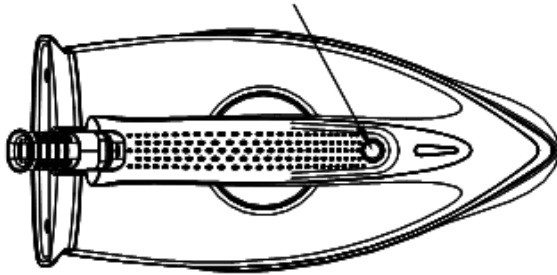
When the iron is heating up, the temperature indicator will light up. Once the iron has reached the selected temperature, it will turn off. The temperature indicator will illuminate solidly during heating.

### **TEMPERATURE INDICATOR**

When the appliance is heated to the selected temperature and the temperature indicator is turned off, press the steam trigger and the steam will spray from the soleplate. When the steam trigger is not used, the appliance can only be used for dry ironing without steam.

## CLEAN BUTTON (WITH INDICATOR)

Clean button  
(with indicator)



1. The appliance must be cleaned when the clean indicator lights solidly. Before cleaning, prepare a container for collecting the wastewater.
2. Hold and press the "Clean button" for 2 seconds. When the buzzer sounds, keep away from the appliance to avoid being burnt by high-temperature steam during the cleaning process. As the appliance enters the cleaning mode and the clean indicator blinks. After about 3 minutes, the cleaning is completed, and the appliance returns to the working condition.

### NOTES

- (1) For a thorough cleaning, please ensure that the temperature dial IS turned to "MAX" setting before activating the "Clean" function. The cleaning may be ineffective or cannot be performed if the temperature dial is turned to other temperature settings except "MAX" setting.
- (2) Before activating the "Clean" function, please ensure that the

appliance is on "Steam" mode. Press the "Steam trigger" once if the appliance is not on the "Steam" mode. The appliance will spray water during cleaning if the appliance is performed cleaning under the "Water Spray" mode. The appliance must be performed cleaning under the "Steam" mode.

### SHOT OF STEAM

Shot of steam can be activated after pressing the steam trigger twice continuously.

### CORD CLIP

When not in use, the power cord can be tied with a cable tie and the steam supply hose can be stored at the cord clips (see Fig.1 & Fig.2).



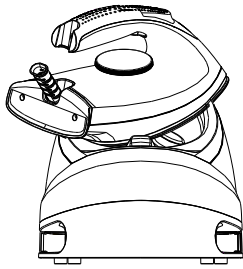
Fig.1

Fig.2

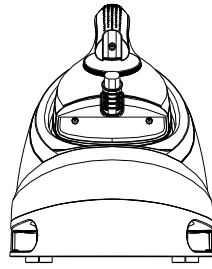
### Correct placement of iron on the thermal insulation stands

When the iron is put on the thermal insulation stand, it must be placed on it correctly (see Fig.3).

Wrong placement



Correct placement



Wrong placement

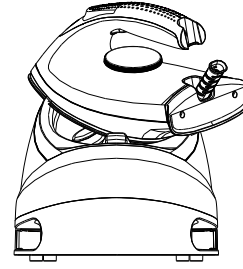


Fig.3

### BEFORE FIRST USE

1. Remove any sticker or protective foil from the soleplate.
2. Fill the water tank with water and heat up the iron at the maximum temperature, and then iron over a piece of damp cloth for several minutes for the purpose of removing any residue on the soleplate according to the section of "Steam ironing".

#### **NOTE:**

- (1) It is normal that strange odor comes out from the unit for the first use.
- (2) Some particles may come out of the soleplate when you use the iron for the first time. this is normal, the particles are harmless and stop coming out of the iron after a short while.

### USING YOUR STEAM STATION

The appliance has two ironing ways. You can use dry ironing or steam ironing; the details refer to the following.

#### **Dry ironing**

1. Put the unit base on a stable and level surface.
2. Put the iron on the thermal insulation stand of unit base



correctly (see Fig.3).

3. Connect the plug to wall outlet, and then turn the temperature dial to select your desired temperature setting, which is depended on the fabric of garment. Refer to **“IRONING TIPS”** and **“ADDITIONAL TABLE”** as below when select temperature.

4. The temperature indicator turns on and the iron starts heating.

5. When the temperature of soleplate reaches the selected temperature, the temperature indicator turns off, and you can start ironing now.

**WARNING:** Never touch hot soleplate at any time before cooling down!

## Steam ironing

1. Put the unit base on a stable and level surface.

2. Grasp the water tank handle and then pull out the water tank horizontally, fill the water tank with water through the filling aperture and then replace the water tank well in position (see Fig.4). Make sure the water tank is pulled out horizontally when removing the water tank. It's better to use purified water with less calcium particles.

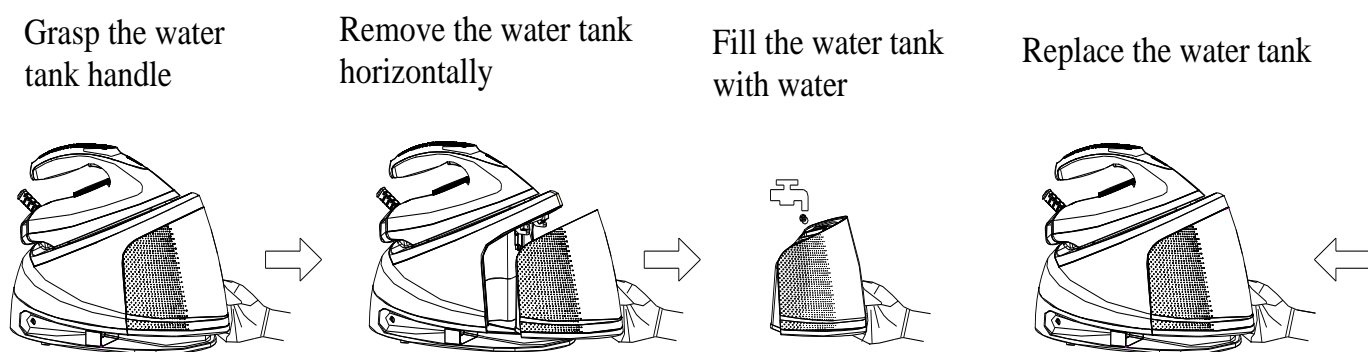


Fig.4

3. Put the iron on the thermal insulation stand of unit base

correctly (see Fig.3).

4. Connect the plug to wall outlet, and then turn the temperature dial to select your desired temperature setting, which is depended on the fabric of garment. Refer to **“IRONING TIPS”** and **“ADDITIONAL TABLE”** as below when select temperature.

5. The temperature indicator turns on and the iron starts heating.

6. After a few minutes, the temperature indicator turns off, which indicates the soleplate temperature has achieved the selected temperature. And you can start ironing with steam now.

7. Press the steam trigger and the steam will be sprayed from the soleplate

continuously, and then you can iron the garment with steam.

**NOTE:** There may be dripping water during spraying steam when the temperature is lower than the second setting. This is normal.

8. If you want to activate the “Shot of steam” function to remove tough wrinkle, continuously press the steam trigger twice to produce shot of steam.

### **CAUTIONS:**

(1) Do not touch hot soleplate at any time before cooling down!

(2) Never direct the steam at people!

(3) Do not activate the steam function when the iron is placed on the unit base to avoid being scalded by steam.

### **CLEANING & MAINTENANCE**

Before cleaning, firstly disconnect the power outlet and let the appliance cool down.

1. Wipe the residues and any other deposits on the soleplate with

a damp cloth or a non-abrasive (liquid) cleaner.

**NOTE:** Do not use chemical, steel, wooden or abrasive cleaners because it will scrape the soleplate.

2. Clean the upper part of iron with a soft damp cloth. Wipe any water droplets on the unit base and the thermal insulation stand with dry cloth.

3. Clean the inside of appliance by following the operation specified in the section of **“Clean button (with indicator)”**.

**NOTES:**

(1) If the appliance keeps spraying water after the “Clean” function is activated, please press the steam trigger to make the appliance enter into the cleaning mode.

(2) If the cleaning indicator keeps blinking and the appliance does not perform cleaning after the “Clean” function is activated, please check and ensure that the temperature dial be turned to the “MAX” setting. The appliance will continue performing cleaning when the temperature dial is turned to the “MAX” setting.

**IRONING TIPS**

-Always check first whether a label with ironing instructions is attached to the article. Follow these ironing instructions in any case.

-The iron heats up quicker than it does cooling down, therefore, you should start ironing the articles requiring the lower temperature such as those made of synthetic fiber.

-If the fabric consists of various kinds of fibers, you must always select the lowest ironing temperature to iron the composition of those fibers.

- Synthetic fibre and silk fabrics should be ironed on their inner

side to avoid being shone.

-Velvet and other textures that rapidly become shiny should be ironed in one direction with light pressure applied. Always keeps the iron moving at any moment.

-Pure wool fabrics (100% wool) may be ironed with the steam iron. Use a dry cloth as a mat and then select the corresponding fabric setting for ironing.

- Never iron over zip, rivet in the cloth. This will damage the soleplate. Iron around any such object.

**NOTE:** When ironing woolen fabrics, shining of the fabric may occur. So, it is suggested that you should turn the article inside out and iron the reverse side.

# Russell Taylors