

# Russell Taylors

E-WARRANTY



SCAN HERE

## USER MANUAL

## TABLE BLENDER

[www.russelltaylors.co.uk](http://www.russelltaylors.co.uk)

TB10

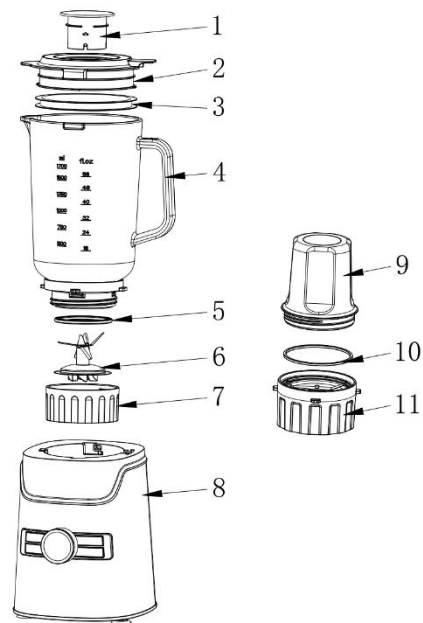


## **SAFETY INSTRUCTION**

1. Please read this manual carefully before using this product.
2. This appliance is not intended for use by persons (including children) with reduced physical, sensory or mental capabilities, or lack of experience and knowledge, unless they have been given supervision or instruction concerning use of the appliance by a person responsible for their safety.
3. Children should be supervised to ensure that they do not play with the appliance.
4. The instructions for food processors and blenders warn against misuse.
5. Be careful when handling the sharp cutting blades, emptying the bowl and during cleaning.
6. Switch off the appliance and disconnect from supply before changing accessories or parts that move in use.
7. Please put it on a dry and stable platform. Do not place this product on a hot air furnace or near a hot stove or touch any hot surfaces. Carefully place the product.
8. Do not hang the power cord on sharp objects, connect to movable objects, touch any hot surface, or tie knots.
9. Do not immerse the power cord, plug or main unit in water or other liquids to prevent leakage.
10. If any wire, plug or product itself is found to have problems or is damaged, please do not use and return the product to a service center for inspection and repair.
11. Please use the provided accessories only, using other illegal accessories may result in fire, electric shock, or injury.
12. Before using the product, make sure that all components are properly installed, and confirm that the voltage is consistent with the specifications of the product. Unplug the power plug from the socket when it is not in use.
13. The whole machine work is strictly prohibited from no-load operation and overloaded use condition.

- 14. After the product is used, it must be cleaned immediately. Be careful when cleaning and installing to avoid cutting your hand.
- 15. When the blender jar is placed on the main body, the machine is equipped with a protection mechanism. The blender jar cover cannot be removed.
- 16. Do not add hot water in the cup. Be careful of being scalded by steam!
- 17. Household use only.

**OVERVIEW OF THE COMPONENTS**



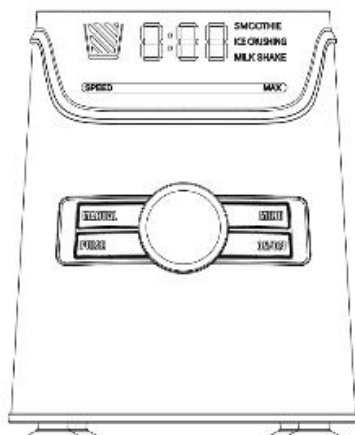
1	Feeding cap	2	Jar cover
3	Seal ring for jar cover	4	Blender jar
5	Seal ring for blade base	6	Blade base for glass jar
7	Blender jar base	8	Main body
9	Grinder cup	10	Seal ring for grinder
11	Grinder blade base		

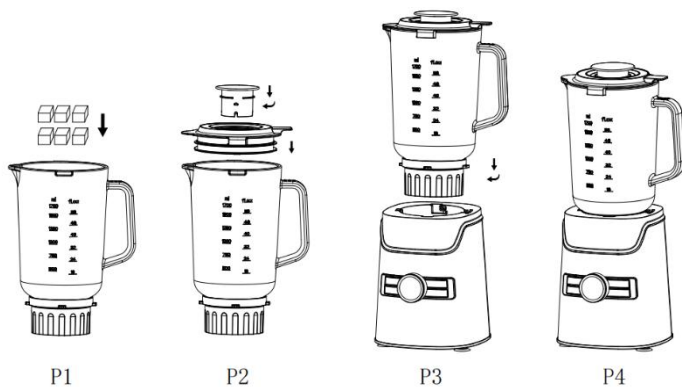
## FEATURES

### How to use the appliance

1. Put the main body on a stable and dry table.
2. Clean the blender jar well. Cut the ingredient into 15\*15\*15mm and put them into the jar with some water (Do not exceed the maximum capacity of 1700ml).
3. Assemble the cover and center lid onto the jar in the lock position.
4. Put the assembled jar into the main body.
5. Rotate the switch to speed OFF.
6. Plug in the appliance, press MENU to select preset program of smoothie, ice crush or milk shake function, then press ON/OFF to start the appliance till it has finish. Alternatively, you can also press MANUAL and then rotate the knob to select speed (1-6 speed, Max 6 speed)
7. Take off the jar and lid. Pouring the juice into your container.
8. Unplug, then clean and dry the blender jar after using.

Notice: Please do not open the jar cover when the blender is running, otherwise there will be some liquid splash.





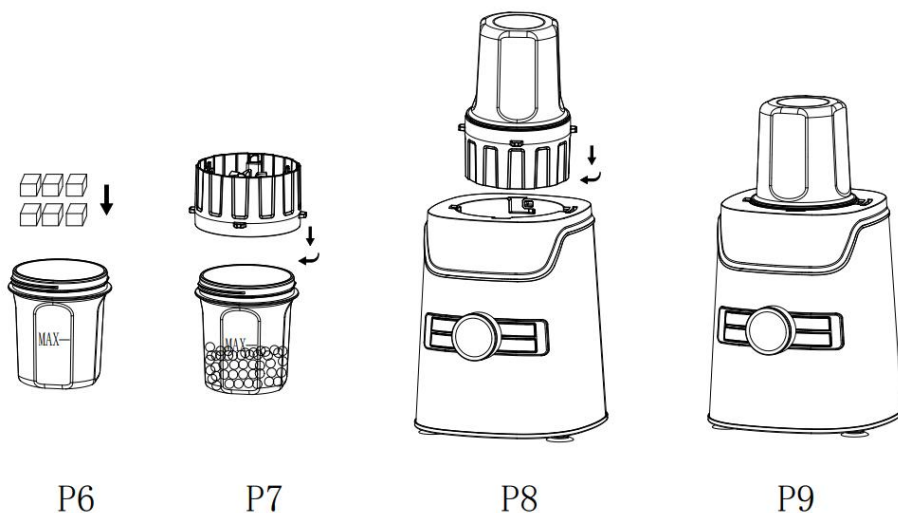
## Blender jar

1. Place the blender cup with mouth facing down on a flat table and turn clockwise to remove the blade holder as shown in P5.
2. The blade seal ring could be removed from the blade holder, as shown in picture 5.
3. For installation, please put the seal ring into the blade holder, and then rotate the holder counterclockwise into the blender cup.

Caution: Beware that the blade is sharp. Do not miss the seat ring during the assembling, and fasten the blade holder counterclockwise.



## Coffee grinder



1. Put the main body on a stable & dry table.
2. Take the grinder and turn the base counterclockwise, and then open the grinder cup.
3. Put coffee beans or other dry ingredient into the cup (as shown in Figure 6), and pay attention not to exceed the MAX capacity.
4. Turn the cup base clockwise and then tighten the cup base (Figure 7).
5. Align the rod of the cup with the slot of the main body and turn it clockwise as shown in Figure 8 to 9
6. Plug the appliance, turn the knob clockwise before work, and when the icon on the screen flashes, the appliance is in standby. Press PULSE button 1-2 times to confirm whether the appliance runs smoothly. If any exception occurs, unplug and reinstall the device by following the preceding steps.
7. Rotate to the maximum speed for grinding. Take note that it can't work continuously exceeding 30 seconds a time, stop for about 1 minute if working for 30 seconds, which regard as a working cycle.

Normally, full powder can be made in 2-3 cycles.

8. After the grinding is finished, turn the knob counterclockwise to the standby state, turn off the power, rotate the grinding cup out of the

## **CLEAN AND MAINTENANCE**

1. When cleaning and wiping the main body (Do not be put into the water to clean), please be sure to unplug the power supply first to avoid electric shock.
2. In addition to the main body, each removable parts can be put into the water to clean, cleaned immediately after the water dry.
3. Blender jar cleaning, you can first add an appropriate amount of warm water and detergent into the cup into the main body on the PULSE gear stirring a few times, and then immersed in the water cleaning, wipe dry;
4. The whole machine should be placed in a ventilated dry place when not in use.
5. Do not use abrasive cleaners when cleaning the product, which may damage the surface of the product.