

Russell Taylors

E-WARRANTY



USER MANUAL

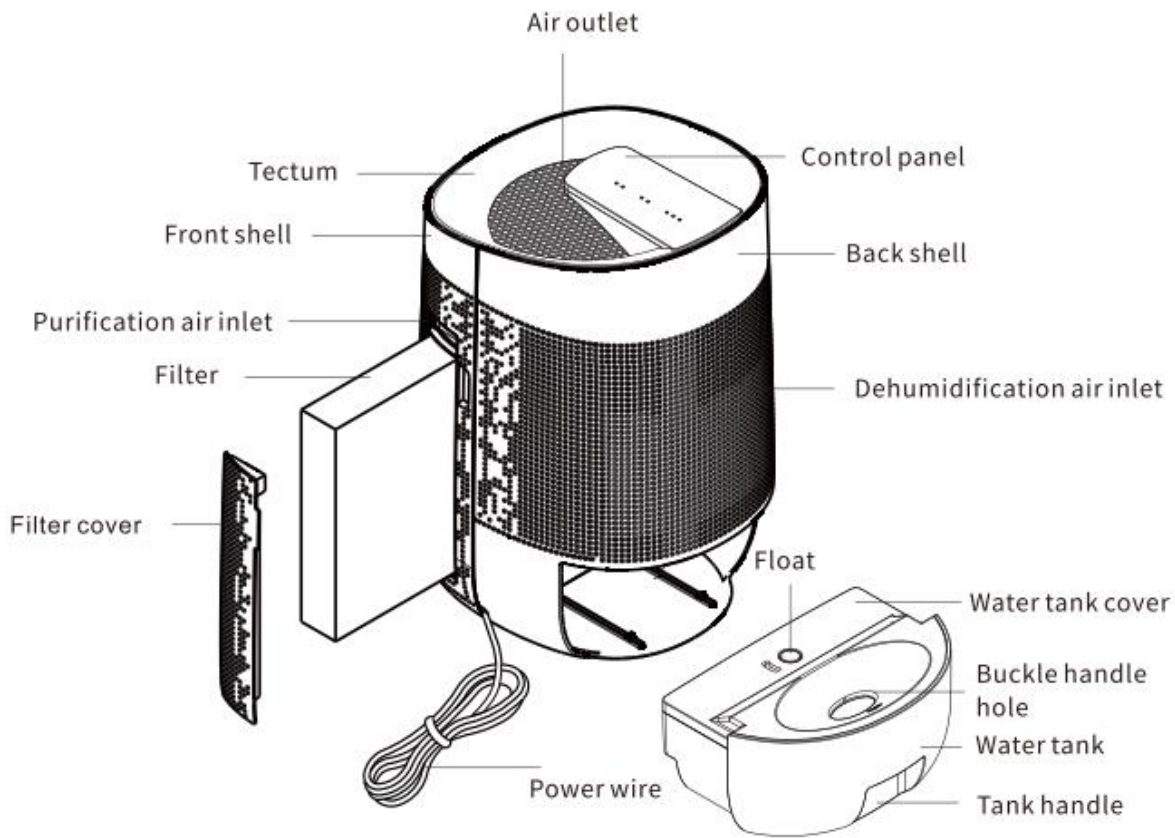
AIR PURIFIER & DEHUMIDIFIER

www.russelltaylors.co.uk

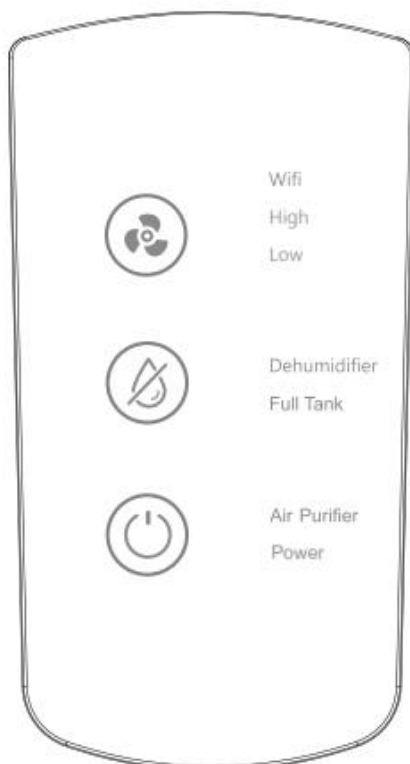


KAPPA PLUS

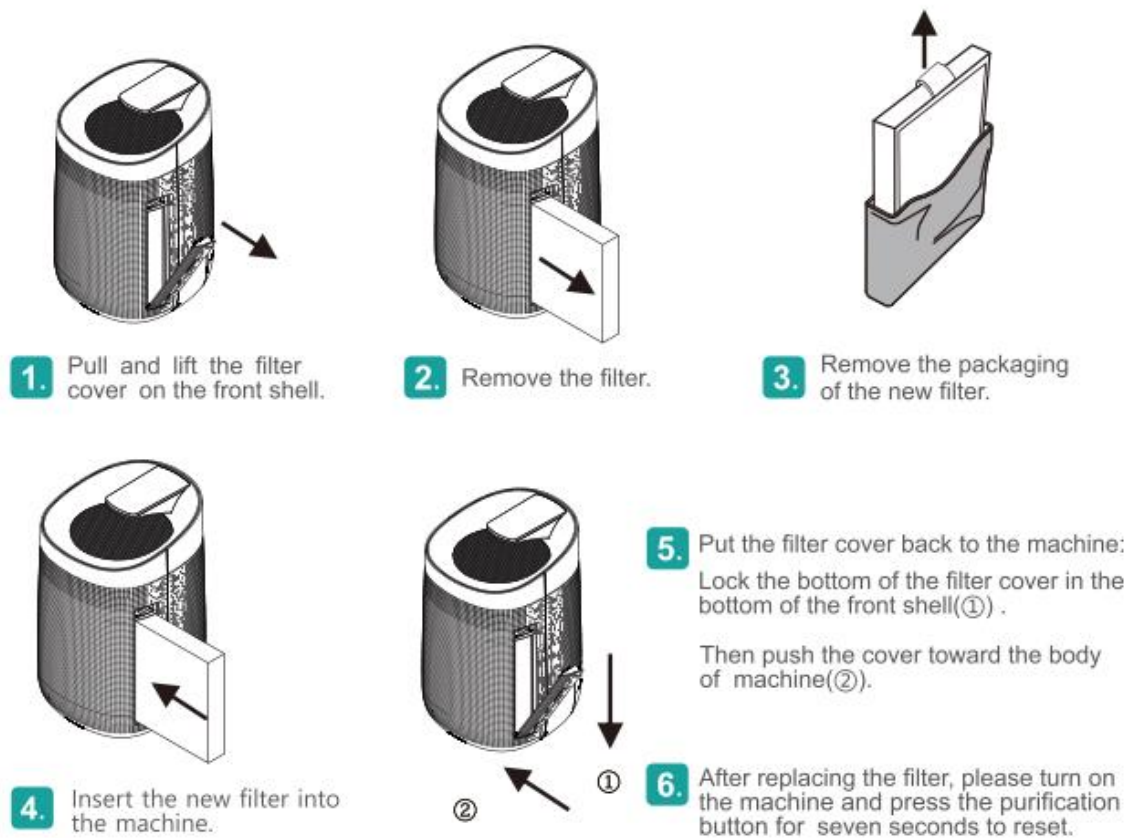
PRODUCT OVERVIEW



CONTROL PANEL



FILTER INSTALLATION



FUNCTION INSTRUCTIONS

An Air Purifier & Dehumidifier combines the functions of dehumidification and air purification. Providing 3 working modes for users to enjoy fresh air and suitable humidity at the same time.

1. **Water Tank Full Indication**

- When the water tank is full, the machine will turn off automatically and the indicator light will change to red and keep flashing.
- Put the water tank back after emptying the water to restart.

2. **Filter Replacement Reminder**

- When the machine detects that the filter needs to be replaced, the LED light will change from Green to Orange and keep flashing.

- b. Press the purification button for 7 seconds to reset after replacing the filter.

BUTTON INSTRUCTIONS

1. Purification Button

- a. Press the purification button and the indicator lights will turn on and the device will begin to run with the LED light turning green.
- b. Press the button again and the LED light turns off while other functions remain unchanged.
- c. Touch the button the third time and the device will turn off completely with all the lights turning off.



- Air Purifier
- Power

2. Dehumidification Button

- a. Press the dehumidification button and the indicator lights will turn on and the device will begin to run with the LED lights turning green.
- b. Press the button the second time and the LED lights turn off while other functions remain unchanged.
- c. Press the button the third time and the dehumidification functions turn off while the air purifier continues running with the indicator still on.



- Dehumidifier
- Full Tank

3. Mode Button

- a. Press the button to change the modes when the purification function is turned on.
- b. This button can be set to 2 modes of speed. The corresponding indicator will turn on after pressing the setting.
- c. Press the mode button for 10 seconds to enter the WIFI connection mode. At this time, there will be 3 beeps and the indicator will flash green. When the device is connected successfully, the indicator will remain on and stop blinking.



- Wifi
- High
- Low

SMART LIFE APP CONNECTIVITY

1. Download & Registration
 - a. Scan the QR Code to download the "Smart Life" App. You can also find it on the Apple App Store or Google Playstore.
 - b. Open the app and tap "Register" to create an account with your phone number or email.
2. Adding your smart device using the "Easy Mode" (Recommended)
 - a. Make sure your device is turned on and your phone is connected to your WIFI network. Ensure that your dehumidifier has the WIFI function turned on.
 - b. Open the Smart Life app and tap the "+" on the top right side of the screen. Select "Add Device" and the app will begin searching for nearby devices. Select the device to pair it to the app and follow the instructions on the screen.
 - c. Once the "Successfully added 1 device" prompt appears, the connection is completed and the device is added in your list

If the above method did not work, you may try adding the device in AP Mode.

1. Ensure the WIFI function is turned on in the dehumidifier.
2. Open the Smart Life app and tap the “+” on the top right side of the screen. Select “Connect Now” and the app will go to your WLAN settings interface. Select the network named “SMART LIFE_XXXX_” and connect to it.
3. Return back to the Smart Life app and the connection will begin automatically.
4. Once the “Successfully added 1 device” prompt appears, the connection is completed and the device is added in your list.

DISPOSAL OF WATER

1. The water tank has a max capacity of 1L with 750ml per day working capacity.
2. The machine will turn off automatically when the water tank is full.
3. Turn off the machine when the water tank is full, pull out the water tank and put it on a horizontal state. Open the water tank cover in an upright direction and pour out the water.
4. Do not move or destroy the water tank float, or the machine will not work.



MAINTENANCE

1. Ensure the machine is unplugged before maintenance.
2. After opening the water tank cover, use a soft cloth to clean the tank.
3. Wipe away any dust or debris on the surface of the unit.
4. Do not clean the filter with a vacuum or wash it, just put the filter under the sun to sterilize regularly.

**Russell
Taylors**