

# Russell Taylors

E-WARRANTY



SCAN HERE

## AIR FRYER USER MANUAL

[www.russelltaylors.co.uk](http://www.russelltaylors.co.uk)



**Z10**

## IMPORTANT SAFEGUARDS

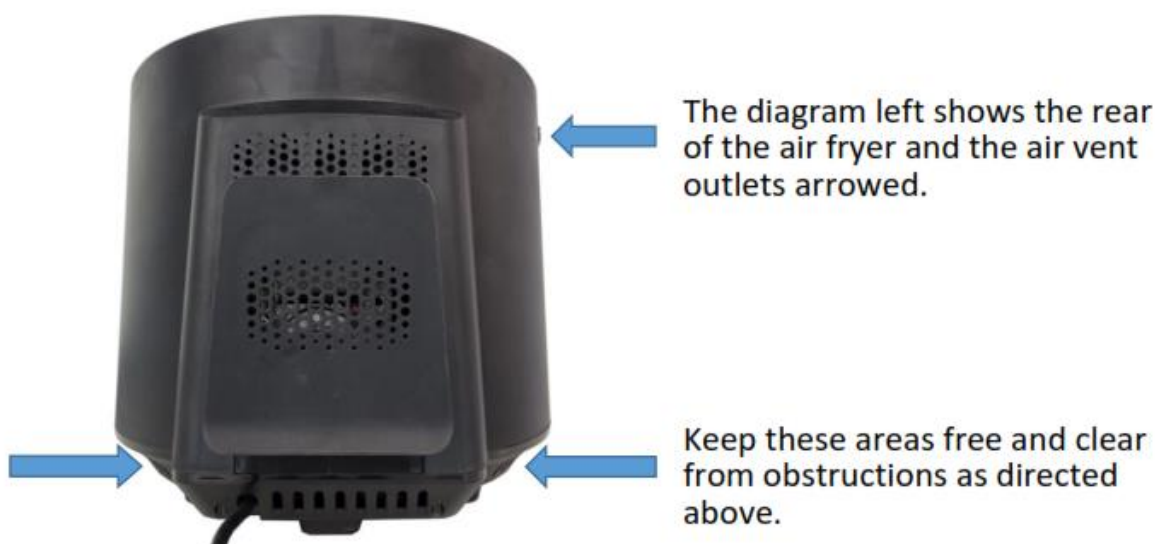
1. Please carefully read the instruction manual, before using the appliance. Keep the manual for reference in future.
2. Never fill the pot with oil as it is a fire hazard.
3. The appliance contains electronic elements and heating elements. Do not put it in water or wash with water.
4. Do not cover the air inlet and outlet during the operating process. Do not touch the inside of the appliance to avoid burns and scalding.
5. The surface will get hot during use. Do not touch the hot surfaces. Use the handle or knob.
6. Hot air will flow out through the outlet when the appliance is in use. Please keep a safe distance. Do not touch the hot surfaces and do not obstruct to the air outlet.

## SAFETY INSTRUCTIONS

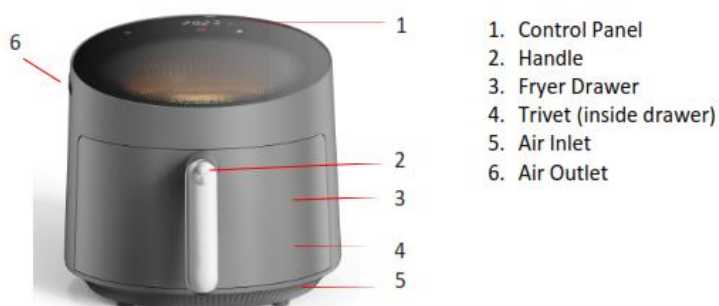
1. Please keep the plug clean to avoid fires or sparks.
2. Do not damage, forcefully pull or twist the power cord, use it to carry heavy loads, let cord hang over edge of table of the table counter, or touch hot surfaces to avoid electric shock, fire, and other accidents. Damaged power cord must be replaced by the Russell Taylors Service Team.
3. Please do not plug and unplug the appliance with wet hands, otherwise it may cause an electric shock.
4. Plug securely while using, otherwise, it may cause electric shock, short circuit, smoke, sparks and other dangers.
5. Do not immerse the appliance, body, cord or plug in water or other liquid, to protect against electrical shock and affecting its function.
6. Do not place the appliance in the presence of explosives and /or flammable fumes.
7. Do not place the appliance on or near the flammable material, such as tablecloths, curtains, and others, to avoid a fire hazard.
8. Be sure to use on a heat resistant and even surface. Keep the appliance at least 30cm away from the wall, furniture, or other flammable materials.
9. The appliance is not intended to be operated by means of an external timer or separate remote-control system.
10. Do not use the appliance for other than its intended use.
11. This appliance is not intended for use by persons (including children) with reduced physical, sensory, or mental capabilities, or lack of experience and knowledge, unless they have been given supervision or instruction concerning

use of the appliance by a person responsible for their safety.

12. Keep the appliance away from children to avoid scalding, electric shock and/or other injuries. Close supervision is necessary when the appliance is used by or near children.
13. This appliance is intended for Household Use Only.
14. Before using, ensure that the air fryer is in a well ventilated area away from other appliances.



## DESCRIPTION OF PARTS



### Description of Parts – Control Panel (1)



- |                             |                             |
|-----------------------------|-----------------------------|
| 7. Power On/Off             | 12. Time Increase (+)       |
| 8. Temperature Decrease (-) | 13. Time Decrease (-)       |
| 9. Temperature Increase (+) | 14. Start/Pause             |
| 10. LED Display             | 15. Cooking Pre-set Program |
| 11. Temperature/Time symbol | 16. Heat Indicator          |

## SETTING UP YOUR AIR FRYER









1. Place the air fryer on a solid, level and heat resistant surface clear of any obstructions.
2. Insert the main plug into a suitable socket.
3. The air fryer will beep and the power on/off button will illuminate to confirm that it is connected to the main power outlet.
4. Remove the fryer drawer by pulling it by the handle.
5. Ensure that the trivet is placed in the bottom of the fryer drawer.
6. Ensure that the four silicone feet (heat resistant) are fitted to the trivet before inserting into the bottom of the fryer drawer.
7. Place the fryer drawer into the air fryer ensure that it is pushed fully. The air fryer will not function if it is not placed fully into the air fryer.

## COOKING WITH YOUR AIR FRYER

1. Remove the fryer basket from the air fryer and ensure that the trivet is placed at the bottom of the fryer drawer.
2. Place the food to be cooked into the basket and ensure that there is enough room left for the hot air to circulate. Do not fill to the brim. Insert the basket back into the air fryer.
3. Press the power on/off button and the control panel will illuminate.
4. For manual cooking, press the temperature increase (+) & decrease (-) buttons to set the desired cooking temperature (up to 200°C).
5. Press the time increase (+) & decrease (-) buttons to set the desired cooking time (1-60 minutes).
6. The air fryer will begin to cook after 5 seconds automatically or press the start/pause button to start immediately.
7. If the fryer drawer is removed, the air fryer will pause the current program and will continue when the drawer is placed back into the air fryer.
8. At the end of the cooking time, the air fryer will stop heating and the LED Display will show "End". However, the fan will continue to run for a few seconds to cool down the appliance.
9. After the fan has stopped, the air fryer will beep 5 times. Remove the food and serve.

## COOKING PRE-SETS

1. This air fryer has 8 pre-set cooking settings for the most common food types for easy use.
2. The table shows the default time and temperature settings for the pre-set programs.
3. Select the desired cooking pre-set program.
4. Press the start/pause button and the air fryer will begin to cook the ingredients.
5. However, you may adjust the temperature and time to override the pre-set settings.

Pre-set	Default Temp(°C)	Default Time(min)	Temperature Range (°C)	Time Range (min)	Shake remind
 Fries	200	28	80-200	1-60	Halfway of cooking
 Steak	200	10	80-200	1-60	Halfway of cooking
 Chicken Leg	200	25	80-200	1-60	Halfway of cooking
 Fish	190	20	80-200	1-60	Halfway of cooking
 Bread	160	20	80-200	1-60	N/A
 Shrimp	160	20	80-200	1-60	Halfway of cooking
 Cake	160	30	80-200	1-60	N/A
 Vegetables	160	30	80-200	1-60	Halfway of cooking

## CLEANING & MAINTENANCE

1. Always unplug the air fryer from the socket and allow it to cool before cleaning.
2. DO NOT clean any part of the air fryer in a dishwasher.
3. Wipe excess oil from the fryer drawer and trivet with a kitchen roll.
4. The fryer drawer and trivet can be washed in warm soapy water, rinsed and dried before reusing.
5. Do not clean any parts of the air fryer with a harsh or abrasive cleaner.